

# Woonveld 1 Woning 1

3 slaapkamers

Datum:

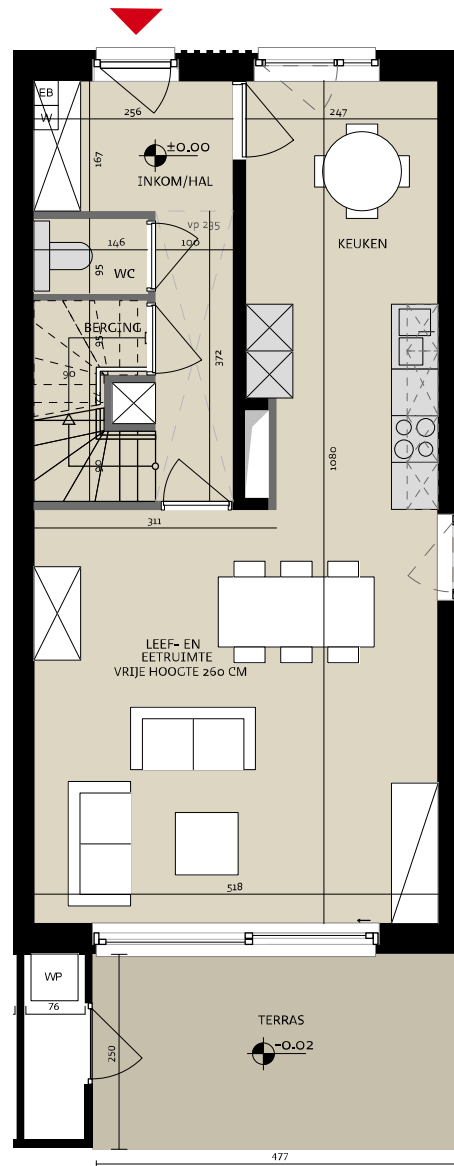
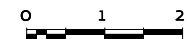
Handtekening kopers:



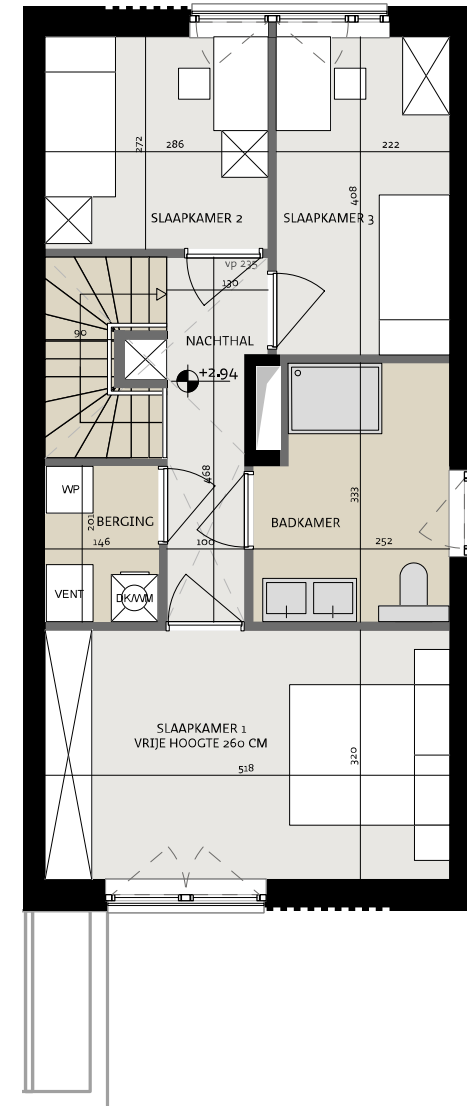
## Woning 1

Tonkin, 9700 Oudenaarde

Bruto oppervlakte 133,20 m<sup>2</sup>  
Slaapkamers 3  
Perceel 404,80 m<sup>2</sup>



Vooraanzicht



Situeringplan



Projectontwikkelaar  
**steenoven**



ALHEEMBOUW

Kwadestraat 149a bus 3.1  
8800 Roeselare

Architect

**WES**

Edmond Blockstraat 9  
9050 Gentbrugge